

# GEX HANDHELD EXTRUDER

## The GEX Hand Extruder

is the most complete, easy-to-use hand extruder on the market. It's perfect for ribbon handles, sculptural parts, and small shape runs for a thousand other uses. The GEX comes fully assembled, ready to use, and equipped with 8 solid die shapes (3 round coils, 3 square coils, and 2 ribbons). All parts are fully replaceable in case of damage or defect. It's easy to clean your GEX, too: all you need is warm water! You'll find many uses for this exceptionally rugged small extruder in your studio or classroom. Full instructions, parts list and adjustment tool included with the extruder.



GEXHB

- 15x2" aluminum barrel
- Quick-release end cap
- One-year warranty on parts.
- Comes with 8 standard dies.
- Hollow die center brace sold separately.
- 12:1 mechanical gearing for ease of use.
- Max capacity about 2½ lbs of clay.

GEX.....Handheld Extruder (only).....\$99.95

GEXEV .....Complete Set.....\$274.95  
(includes all dies and hollow die brace:  
value \$341.95 purchased separately)

## Hollow Shapes

GEXH1.....Lg Triangle ( $1\frac{9}{16}$ " x $1\frac{1}{4}$ " ) .....	\$8.00
GEXH2.....Sm Triangle ( $1\frac{3}{16}$ " x $3\frac{3}{16}$ " ) .....	\$8.00
GEXH3.....Lg Square ( $1\frac{3}{16}$ " x $1\frac{1}{4}$ " ) .....	\$8.00
GEXH4.....Sm Square (1" x $3\frac{3}{16}$ " ) .....	\$8.00
GEXH5.....Lg Octagon ( $1\frac{7}{16}$ " x $5\frac{5}{16}$ " ) .....	\$8.00
GEXH6.....Sm Octagon (1" x $3\frac{3}{16}$ " ) .....	\$8.00
GEXH7.....Lg Bar ( $1\frac{3}{4}$ " x $1\frac{1}{4}$ " ) .....	\$8.00
GEXH8.....Sm Bar ( $1\frac{1}{4}$ " x $3\frac{3}{16}$ " ) .....	\$8.00
GEXH9.....Lg Round Tube .....	\$8.00

GEXHB.....Hollow Die Brace.....\$58.00  
(with 8 manufacturer bonus dies)

GEXHB9 .....Set of 9 with Brace .....\$95.00  
(Retail value \$122 purchased separately  
and includes the 8 manufacturer bonus dies)



GEXH9  
Hollow Round Tube  
(no sample image available)



**Portland Store:** 756 NE Lombard St • Portland, OR 97211 • 503-283-1353  
**Eugene Store:** 1471 Railroad Blvd #9 • Eugene, OR 97405 • 541-338-7654

# GEX EXTRUDER DIES

## Basic Shapes



## Handle Ribbons



## Solid Ropes



## Solid Coils



**ALL GEX SINGLE DIES (Shapes, Ropes & Coils)..... \$8.00 ea**

### Basic Shapes

GEXB1.....Small Round (1/4")  
 GEXB2.....Medium Round (1/2")  
 GEXB3.....Large Round (3/4")  
 GEXB4.....Small Ribbon (1/8 X 3/4")  
 GEXB5.....Large Ribbon (1/4 x 1-1/8")  
 GEXB6.....Small Square (1/4")  
 GEXB7.....Medium Square (1/2")  
 GEXB8.....Large Square (3/4")

### Handle Shapes

GEXN1.....#1 (1-1/8 x 3/8")  
 GEXN2.....#2 (7/8 x 3/8")  
 GEXN3.....#3 (1-5/16 x 1/4")  
 GEXN4.....#4 (1-7/16 x 3/8")  
 GEXN5.....#5 (7/8 x 1/2")  
 GEXN6.....#6 (1-1/16 x 3/8")  
 GEXN7.....#7 (1-3/16 x 7/16")  
 GEXN8.....#8 (1-1/16 x 3/8")

### Solid Ropes

GEXR1.....4-pt Rope 1-5/8"w  
 GEXR2.....4-pt Rope 1-1/16"w  
 GEXR3.....3-pt Rope 1-3/8"w  
 GEXR4.....3-pt Rope 15/16"w

### Solid Coils

GEXC1.....1-1/2 x 13/16"  
 GEXC2.....1-3/16 x 5/8"  
 GEXC3.....1-3/16 x 5/8"

### Die Sets

GEXB .....Blank Dies (set of 4) .....\$10.00  
 GEXBS.....Basic Shapes (set of 8) .....\$50.00  
 GEXNS.....Handle Shapes (set of 8) .....\$48.00  
 GEXRS.....Rope Shapes (set of 4) .....\$24.00



**Portland Store:** 756 NE Lombard St • Portland, OR 97211 • 503-283-1353  
**Eugene Store:** 1471 Railroad Blvd #9 • Eugene, OR 97405 • 541-338-7654

# Congratulations on your purchase of Georgies GEX Handheld Extruder!

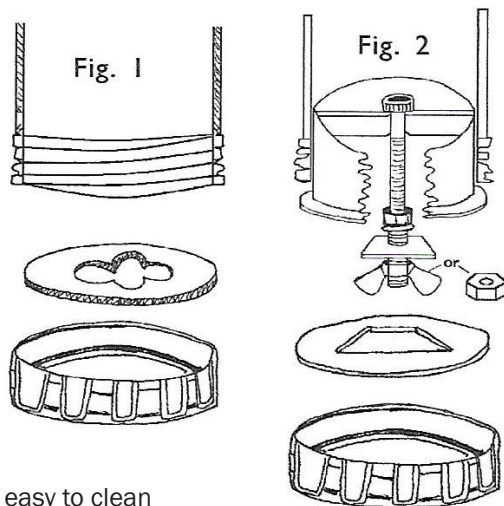
The GEX Extruder is the most complete, easy-to-use hand held extruder on the market. Your basic GEX Extruder comes assembled, ready to use, and equipped with 8 solid die forms (3 round coils, 3 square coils, and 2 ribbons). All parts are fully replaceable in case of damage or defect. You'll find a complete parts list on the back of this sheet. We also include the tool needed to tighten, adjust or disassemble your GEX Extruder.

## How to Load Your Extruder

1. Press "release" lever and hold down with thumb of one hand while pulling back on the T-shaped handle of the plunger shaft. The tamper is now fully up at the tip of the extruder barrel.
2. You may load clay from the top of the barrel or the bottom end cap, whichever you prefer.
3. You will find it easiest to load if you prepare a rough handrolled coil, approximately the width of the barrel, and drop it into the extruder through the die end of the barrel.
4. If the clay is very wet, you may add a small amount of oil on the inside of the tube to reduce drag and sticking.
5. Screw the end cap with the die onto the barrel. You are ready to extrude!

## How to Use Your Extruder

1. ALL extruders require **SOFT** clay
2. Select the die shape desired and place it in the end cap (see Figure 1)
3. Load the extruder as described above.
4. Squeeze the easy-to-use handle until the plunger engages the clay. Continue to squeeze and your extrusion evacuates from the tube. Depending on the type and length of your desired extrusion, you may find it easiest to rest the end of the barrel parallel on a table and "lay out" the extrusion. Even though the handle is easy-squeeze, this method enables many users with smaller hands to get a better grip and give the gun a "two-fisted" squeeze.
5. All of the clay evacuates cleanly from the barrel of the extruder.
6. Reload, or change the dies and reload. Remember to press the release lever and pull back on the plunger shaft. As the tamper pulls back, the pressure is released and it will be easy to unscrew the end cap.



It's easy to clean  
your GEX Extruder!

All you need is warm water! Be sure that the inner end cap is tight. Use your enclosed tool to tighten or adjust.

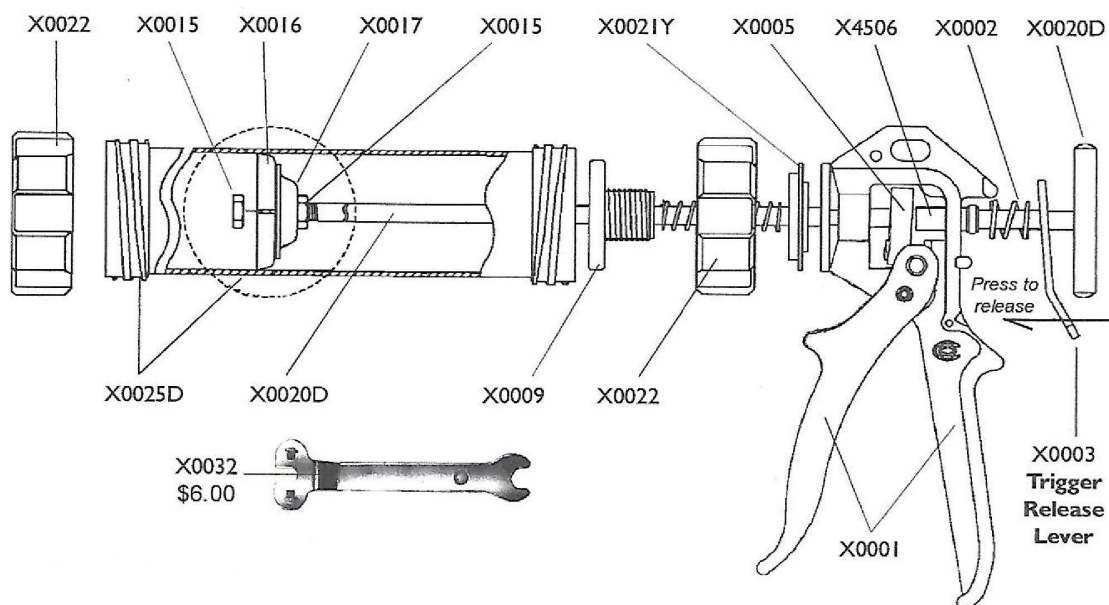
## How to Use Hollow Dies

1. Select your die shape. Hollow forms require 2-part dies, with both inner and outer shapes.
2. The bottom locking nut position can be adjusted with a wrench to desired height.
3. Snug the inner die up to the inner die stop.
4. Hand-tighten with wing nut or screw nut. Both are included and which one to use is your choice (see Figure 2). Note - if the hollow die's center part is smaller than the wing nut, use the screw nut instead to hold the center part in place.
5. **DO NOT OVERTIGHTEN** or mechanically tighten these fittings. Lock nuts secure the screw shaft in vertical position for even extrusions.
6. Load clay in the extruder
7. Slide hollow brace, loaded with inner die, into barrel.
8. Place outer die brace into end cap and screw on
9. Adjust position of inner die brace with Allen wrench, if necessary to conform to shape or orientation of outer die (so that corners line up with corners, unless you want them intentionally offset).
10. Simply squeeze the handle to extrude the clay. There is no need to apply undue or extreme pressure. Forcing too-firm clay through the extruder or using undue force can bend dies or even break the hollow die brace. **Warranty repairs do not cover damage from undue or extreme pressure.**



**Portland Store:** 756 NE Lombard St • Portland, OR 97211 • 503-283-1353  
**Eugene Store:** 1471 Railroad Blvd #9 • Eugene, OR 97405 • 541-338-7654

# Gex Extruder Parts List



## REPLACEMENT PART LIST

X0001 .....	Handle Assembly .....	\$36.00
X0002 .....	Upper Spring .....	\$1.00
X0003 .....	Trigger Release Lever .....	\$2.30
X0004 .....	Lower Spring .....	\$1.30
X0005 .....	Shaft Acuator .....	\$5.00
X0009 .....	End Cap Retainer.....	\$6.90
X0015 .....	Nut .....	\$1.00
X0016 .....	Tamper Gasket.....	\$3.00
X0017.....	Tamper .....	\$1.90
X0020D ....	Plunger Shaft (state size)....	\$13.25
X0021Y .....	End Cap Gasket .....	\$3.25
X0022 .....	End Cap.....	\$10.00
X0022A.....	Inner End Cap .....	\$10.00
X0025D ....	Barrel.....	\$39.52
X0032 .....	Spanner Wrench .....	\$6.00
X1033 .....	Plunger Extension.....	\$3.00
X4506 .....	Shaft Acuator Sleeve .....	\$3.25

## GEX now has a Plunger Extension!

All GEX extruders come with the Plunger Extension (X1033). This part reduces waste by allowing more material to be pushed through the nozzle. It is possible to bend dies or damage the Hollow Die Brace by forcing the Plunger Extension too hard against the die. This should not happen, however, with normal use. To add the Plunger Extension to your current GEX, call us here at Georgies to order the part X1033. It screws easily onto the end of the rod.



**Portland Store:** 756 NE Lombard St • Portland, OR 97211 • 503-283-1353  
**Eugene Store:** 1471 Railroad Blvd #9 • Eugene, OR 97405 • 541-338-7654